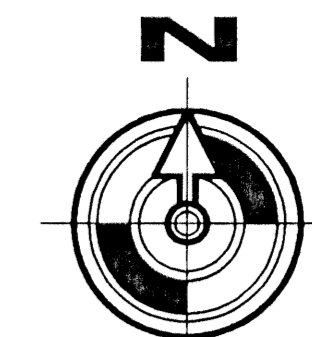


BRYNTESON NURSERY, P.U.D.
WILLOUGHBY FARMS

A Portion of Government Lot 2, Tract 37 and Government Lot 1, Tract 38 of the hiatus between
 Townships 44 and 45 South, Range 42 East (also known as Township 44 1/2 South, Range 42 East)
 together with a portion of Section 1 and 2, Township 45 South, Range 42 East
 Palm Beach County, Florida



SCALE: 1"=40'

202

State of Florida ss
 County of Palm Beach
 This Plat was Filed for Record
 at this day
 of 1999
 and Duly Recorded in Plat Book
 on Page
 thru Page
 Dorothy H. Wilken, Clerk
 By: D.C.

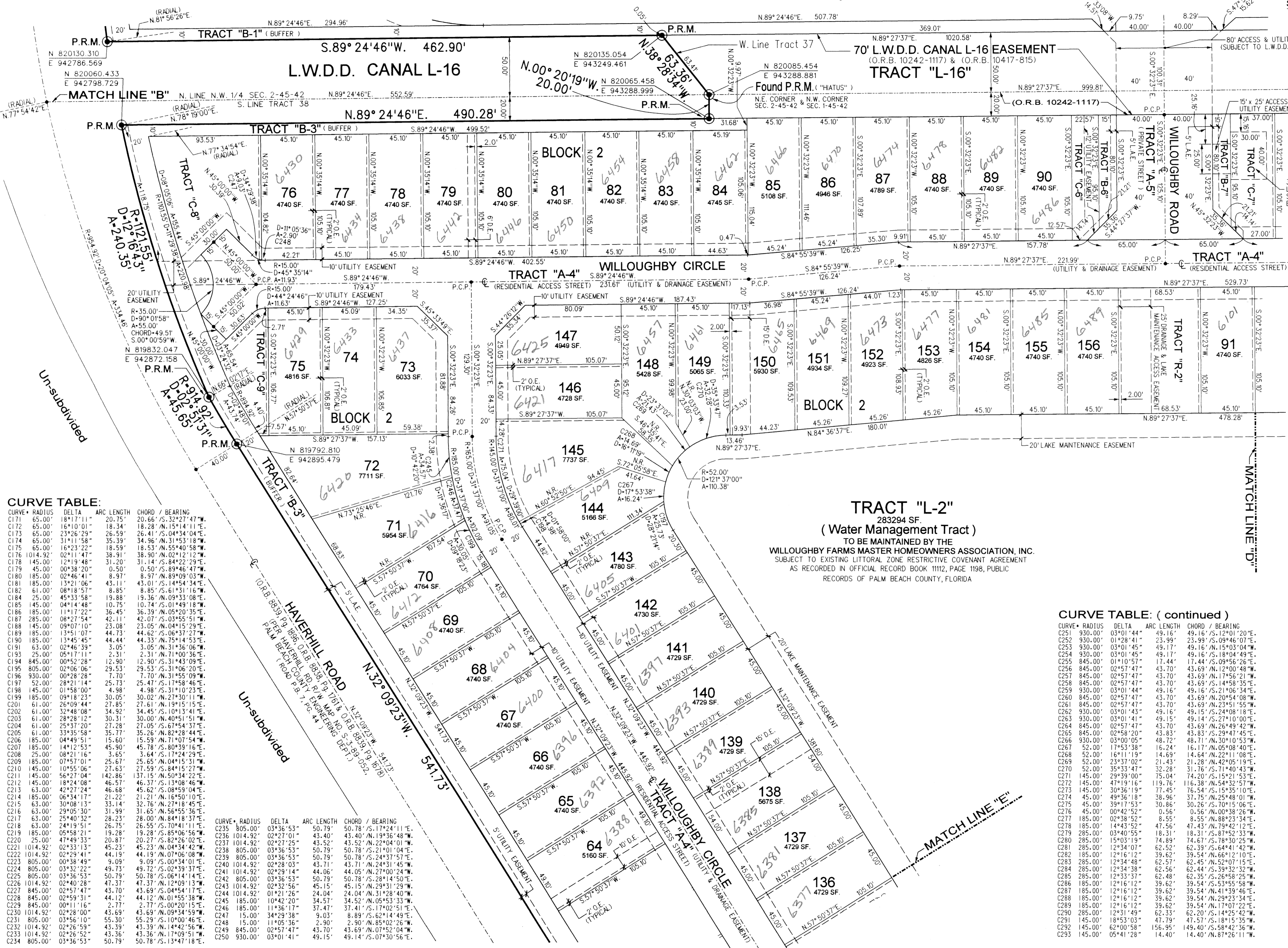
Sheet 5 of 7 Sheets

- PLAT LEGEND:**
- P.R.M. Denotes Set Permanent Reference Monument (P.R.M.) P.L.S. No. 5061, Unless otherwise shown
 - C Denotes Centerline
 - A Denotes Arc length
 - R Denotes Radius
 - D Denotes Delta (central angle)
 - C1 Denotes Curve (refer to Curve Table)
 - P.O.B. Denotes Point of Beginning
 - P.O.C. Denotes Point of Commencement
 - P.B.C.R. Denotes Palm Beach County Records
 - O.R.B. Denotes Official Records Book
 - P.B. Denotes Plat Book
 - P.C.P. Denotes Permanent Control Point
 - N.R. Denotes Non-Radial
 - O.E. Denotes Overhang Easement
 - R/W Denotes Right-of-Way
 - SEC. Denotes Section
 - S.F. Denotes Square Feet
 - D.E. Denotes Drainage Easement
 - U.E. Denotes Utility Easement
 - L.A.E. Denotes Limited Access Easement
 - (M) Denotes Measured

SURVEYOR'S NOTES:

- NOTICE: This Plat as recorded in its graphic form, is the Official depiction of the subdivided lands described herein and within no circumstances be supplanted in authority by any other graphic or digital form of the plat.
- Bearings and Coordinates shown hereon are based upon the STATE PLANE COORDINATE SYSTEM TRANSVERSE MERCATOR - FLORIDA EAST ZONE, 1983 projection, with the NAD 1990 adjustment.
- State Plane Bearings shown are Grid Bearing, Distances shown are Ground Distance. The Scale Factor used is 1.000036.
- No Buildings or any kind of construction or trees or shrubs shall be placed on any Easement without prior written approval of all Easement beneficiaries and all applicable County approvals or permits as required for such Encroachments.
- In those cases where Easements of different types cross or overlap, Drainage Easements shall have First Priority, Utility Easements shall have Second Priority, Access Easements shall have Third Priority and all other Easements shall be subordinate to these with their Priorities determined by the use of rights granted.
- The Building Setbacks and Site Regulations shall comply with the Approved Master Plan and Current Palm Beach County Zoning Regulations.

There may be additional Restrictions that are not Recorded on this Plat that may be found in the Public Records of Palm Beach County, Florida.

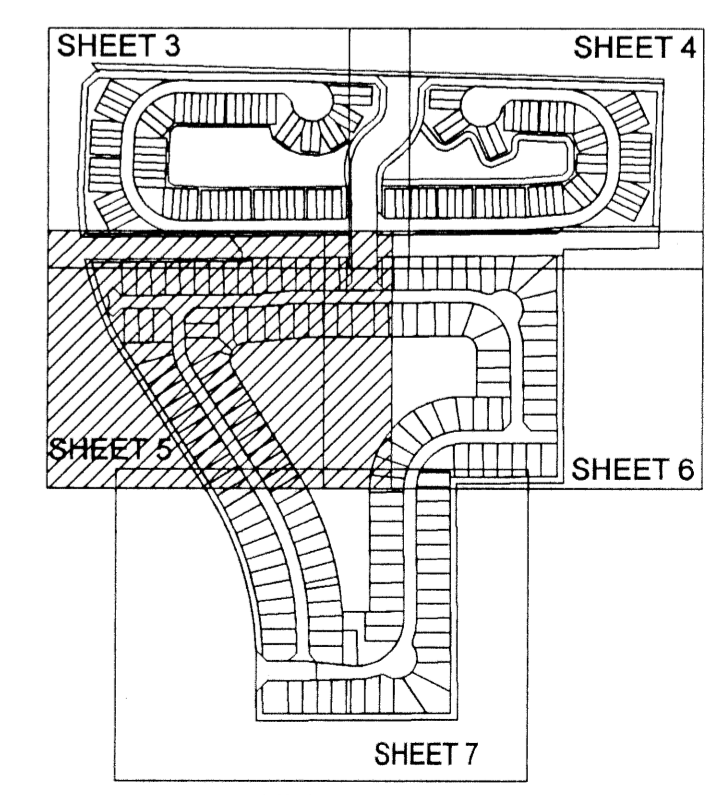


CURVE TABLE:

CURVE	RADIUS	DELTA	ARC LENGTH	CHORD / BEARING
C171	65.00'	18°17'11"	20.75'	20.66' / S.32°27'47"W
C172	65.00'	16°10'01"	18.34'	18.28' / N.15°14'11"E
C173	65.00'	23°26'29"	26.59'	26.41' / S.04°34'04"E
C174	65.00'	31°11'58"	35.39'	34.96' / N.31°41'18"W
C175	65.00'	16°19'22"	18.59'	18.53' / N.55°40'51"W
C176	1014.92'	02°11'47"	38.91'	38.90' / N.02°12'12"W
C178	145.00'	12°19'48"	31.20'	31.14' / S.84°22'29"E
C179	45.00'	00°38'20"	0.50'	0.50' / S.89°46'47"W
C180	185.00'	02°46'41"	8.91'	8.97' / N.89°09'03"E
C181	65.00'	13°21'06"	43.11'	43.09' / S.14°54'34"E
C182	61.00'	08°18'57"	8.85'	8.85' / S.61°31'16"W
C184	25.00'	45°33'58"	19.88'	19.36' / N.09°33'08"E
C185	145.00'	04°14'48"	10.75'	10.74' / S.01°49'18"W
C186	185.00'	11°17'22"	36.45'	36.39' / N.05°20'35"E
C187	65.00'	08°27'42"	42.11'	42.07' / S.03°59'51"W
C188	145.00'	09°07'10"	23.08'	23.05' / N.04°15'29"E
C189	185.00'	13°51'07"	44.73'	44.62' / S.06°37'27"W
C190	185.00'	13°45'45"	44.43'	44.33' / N.75°14'53"E
C191	65.00'	02°46'39"	3.05'	3.05' / N.31°36'06"E
C193	25.00'	05°17'11"	2.31'	2.31' / N.71°00'36"E
C194	845.00'	00°52'28"	12.90'	12.90' / S.31°43'09"E
C195	805.00'	02°06'06"	29.53'	29.53' / S.31°06'20"E
C196	930.00'	00°28'28"	7.70'	7.70' / N.31°55'09"E
C197	52.00'	28°21'44"	25.73'	25.47' / S.17°58'46"E
C198	145.00'	01°58'00"	4.98'	4.98' / S.31°10'23"E
C199	185.00'	09°18'23"	30.05'	30.02' / N.27°30'11"W
C201	61.00'	26°09'44"	27.85'	27.61' / N.19°15'15"E
C202	61.00'	32°48'08"	34.92'	34.45' / S.10°13'41"E
C203	61.00'	28°28'12"	30.31'	30.00' / N.40°51'51"W
C204	61.00'	25°37'20"	27.28'	27.05' / S.67°54'37"E
C205	61.00'	33°35'58"	35.77'	35.26' / N.82°28'44"E
C206	185.00'	04°49'51"	15.60'	15.59' / N.71°07'54"W
C207	185.00'	14°12'54"	45.90'	45.78' / S.80°39'16"E
C208	25.00'	08°21'16"	3.85'	3.84' / S.17°24'29"E
C209	185.00'	07°57'01"	25.67'	25.65' / N.04°15'31"W
C210	145.00'	10°55'06"	27.63'	27.59' / S.84°15'27"W
C211	145.00'	56°27'04"	142.86'	137.15' / N.50°34'22"E
C212	145.00'	18°24'08"	46.57'	46.37' / S.13°08'46"W
C213	63.00'	42°27'24"	46.88'	45.52' / S.08°59'04"E
C214	185.00'	06°34'17"	21.22'	21.21' / N.16°50'10"E
C215	63.00'	30°08'13"	33.14'	32.76' / N.27°18'45"E
C216	63.00'	29°05'30"	31.99'	31.65' / N.56°55'36"E
C217	63.00'	25°40'32"	28.23'	28.00' / N.84°18'37"E
C218	63.00'	24°19'51"	26.75'	26.55' / S.70°41'11"E
C219	185.00'	05°58'21"	19.28'	19.28' / S.85°06'56"W
C220	25.00'	47°49'33"	20.87'	20.27' / S.82°26'02"E
C221	1014.92'	02°33'13"	45.23'	45.23' / N.04°34'42"E
C222	1014.92'	02°29'41"	44.19'	44.19' / N.07°06'08"W
C223	805.00'	00°38'49"	9.09'	9.09' / S.00°34'01"E
C224	805.00'	03°32'22"	49.73'	49.72' / S.02°39'37"E
C225	805.00'	03°36'53"	50.79'	50.78' / S.06°14'14"E
C226	1014.92'	02°40'28"	47.37'	47.37' / N.12°09'13"W
C227	845.00'	02°57'47"	43.70'	43.69' / S.04°54'17"E
C228	845.00'	02°59'31"	44.12'	44.12' / N.01°55'38"W
C229	845.00'	00°11'16"	2.77'	2.77' / S.00°20'15"E
C230	1014.92'	02°28'00"	43.69'	43.69' / N.09°34'59"W
C231	805.00'	03°56'10"	55.30'	55.29' / S.10°00'46"E
C232	1014.92'	02°26'59"	43.36'	43.39' / N.14°42'56"W
C233	1014.92'	02°26'52"	43.36'	43.36' / N.17°09'51"W
C234	805.00'	03°56'53"	50.79'	50.78' / S.13°47'18"E
C235	805.00'	03°56'53"	50.79'	50.78' / S.13°47'18"E
C236	1014.92'	02°27'01"	43.40'	43.40' / N.19°56'48"W
C237	1014.92'	02°27'25"	43.52'	43.52' / N.22°04'01"E
C238	805.00'	03°36'53"	50.79'	50.78' / S.21°01'04"E
C239	805.00'	03°36'53"	50.79'	50.78' / S.24°37'57"E
C240	1014.92'	02°28'03"	43.71'	43.71' / N.24°31'45"W
C241	1014.92'	02°29'14"	44.06'	44.05' / N.27°00'24"W
C242	805.00'	03°36'53"	50.79'	50.78' / S.28°14'50"E
C243	1014.92'	02°32'56"	45.15'	45.15' / N.29°31'29"W
C244	1014.92'	01°21'26"	24.04'	24.04' / N.31°28'40"W
C245	185.00'	10°42'20"	34.57'	34.52' / N.05°53'33"W
C246	185.00'	11°36'17"	37.41'	37.41' / S.17°02'51"E
C247	15.00'	34°29'38"	9.03'	8.89' / S.62°14'49"E
C248	15.00'	11°05'36"	2.90'	2.90' / N.85°02'26"W
C249	845.00'	02°57'47"	43.70'	43.69' / N.07°52'04"W
C250	930.00'	03°01'41"	49.15'	49.14' / S.07°30'56"E

CURVE TABLE: (continued)

CURVE	RADIUS	DELTA	ARC LENGTH	CHORD / BEARING
C251	930.00'	03°01'44"	49.16'	49.16' / S.12°01'20"E
C252	930.00'	01°28'41"	23.99'	23.99' / S.09°46'07"E
C253	930.00'	03°01'45"	49.17'	49.16' / N.15°03'04"E
C254	930.00'	03°01'45"	49.17'	49.16' / S.18°04'49"E
C255	845.00'	01°10'57"	17.44'	17.44' / S.09°56'26"E
C256	845.00'	02°57'47"	43.70'	43.69' / N.12°00'48"W
C257	845.00'	02°57'47"	43.70'	43.69' / N.17°56'21"W
C258	845.00'	02°57'47"	43.70'	43.69' / S.14°58'35"E
C259	930.00'	03°01'44"	49.16'	49.16' / S.21°06'34"E
C260	845.00'	02°57'47"	43.70'	43.69' / N.20°54'08"W
C261	845.00'	02°57'47"	43.70'	43.69' / N.23°51'55"W
C262	930.00'	03°01'43"	49.16'	49.15' / S.24°08'18"E
C263	930.00'	03°01'41"	49.15'	49.14' / S.27°10'00"E
C264	845.00'	02°57'47"	43.70'	43.69' / N.26°49'42"E
C265	845.00'	02°58'20"	43.83'	43.83' / S.29°47'45"E
C266	930.00'	03°01'05"	48.72'	48.71' / N.30°10'53"W
C267	52.00'	17°53'38"	16.24'	16.17' / N.05°08'40"E
C268	52.00'	16°11'19"	14.69'	14.64' / N.22°11'08"E
C269	52.00'	23°37'02"	21.43'	21.28' / N.42°05'19"E
C270	52.00'	35°33'47"	32.28'	31.76' / S.71°40'43"W
C271	145.00'	29°39'00"	75.04'	74.20' / S.15°21'53"E
C272	145.00'	47°19'16"	119.76'	116.38' / N.54°32'57"W
C273	185.00'	14°43'52"	47.55'	47.45' / N.79°42'12"E
C274	45.00'	49°36'18"	38.96'	37.75' / N.25°48'01"W
C275	45.00'	39°17'53"	30.86'	30.26' / S.70°15'06"E
C276	45.00'	00°42'52"	0.56'	0.56' / N.00°38'26"W
C277	185.00'	02°38'52"	47.55'	47.55' / N.88°23'34"E
C278	185.00'	14°43'52"	47.55'	47.45' / N.79°42'12"E
C279	285.00'	03°40'55"	18.31'	18.31' / S.87°52'33"W
C280	285.00'	15°03'19"	74.89'	74.67' / S.78°30'25"W
C281	285.00'	12°34'07"	62.52'	62.39' / S.64°41'42"E
C282	285.00'	12°16'12"	39.62'	39.54' / N.66°12'10"E
C283	285.00'	12°34'08"	62.56'	62.35' / N.59°40'12"E
C284	285.00'	12°34'38"	62.56'	62.44' / S.39°32'32"W
C285	285.00'	12°33'37"	62.48'	62.35' / S.26°58'25"W
C286	185.00'	12°16'12"	39.62'	39.54' / S.53°55'58"W
C287	185.00'	12°16'12"	39.62'	39.54' / N.41°39'46"E
C288	185.00'	12°16'12"	39.62'	39.54' / N.29°25'14"E
C289	185.00'	12°16'12"	39.62'	39.54' / N.17°07'22"E
C290	285.00'	12°31'49"	62.33'	62.20' / S.14°25'42"W
C291	145.00'	18°53'03"	47.79'	47.57' / S.18°15'35"W
C292	145.00'	62°00'58"	156.95'	149.40' / S.58°42'36"W
C293	145.00'	05°41'28"	14.40'	14.40' / N.87°26'11"W



Willoughby Farms
 3850 N.W. Boca Raton Blvd.
 Boca Raton, FL 33431
 Phone: (561) 395-3600
 Fax: (561) 395-2237
 E-Mail: hwa@hwa.com